

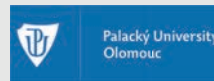
COPERNICUS DATA IN SUSTAINABLE DEVELOPMENT GOALS USING IMAGE MAPS

A4 Handy Maps



Sushmita SUBEDI

Palacký University
Olomouc, 2023



SUPERVISOR

Prof. Dr. Vít VOŽENÍLEK | Palacký University Olomouc

CO-SUPERVISOR

Assoc. Prof. Stefan LANG, Ph.D. | University of Salzburg

Table of Contents

1	<i>Soil Loss in Italy, 2021-2050</i>		
		<i>Surface Soil Moisture in Australia, January 2023</i>	2
3	<i>Turbidity in Lake Turkana, 21 January 2023</i>		
		<i>Built-Up Surface in Vienna, 2020</i>	4
5	<i>Particulate Matter (2.5) in China, 15 February 2023</i>		
		<i>Surface Water Chlorophyll in Mediterranean Sea, December 2022</i>	6
7	<i>Sea Water pH in Black Sea, January 2023</i>		
		<i>Solar Photovoltaic Power in Europe, July 2022</i>	8
9	<i>Suitability for Aedes Albopictus in Europe, January 2023</i>		
		<i>Abundance of Atlantic Salmon in Northwest European Shelf, January 2023</i>	10
11	<i>Atmospheric Carbon Dioxide in World Continents, January 2020</i>		
		<i>Atmospheric Methane in World Continents, January 2020</i>	12
13	<i>Forest Cover in Venezuela, 2019</i>		
		<i>Water Ecosystem in Minnesota, 2019</i>	14
15	<i>Riparian Grassland in Rhine Basin, 2018</i>		

SOIL LOSS

Italy, 2021-2050

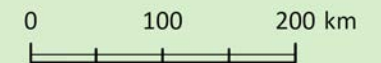
IMAGE MAP TYPE: Double Thematic

Image Component:
Thematic Content: Soil Loss Raster
Data Source: Copernicus Climate Change Service
Spatial Resolution: 500 m
Topographic Base: ESRI World Imagery

Symbol Component:
Labeling, Country boundary, Cities



Map Projection:
Albers Equal Area Conic



Sushmita SUBEDI
Palacký University
Olomouc, 2023



SURFACE SOIL MOISTURE

Australia

January 2023

IMAGE MAP TYPE: Double Thematic

Image Component:

Thematic Content: Soil Moisture
Raster

Data Source: Copernicus Climate
Change Service

Spatial Resolution: 0.25°x 0.25°

Topographic Base: ESRI World
Imagery

Symbol Component:

Labeling, Country boundary, Cities

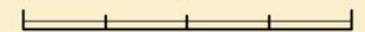
Surface Soil Moisture (%)



Map Projection:

GDA2020

0 500 1,000 km



Sushmita SUBEDI
Palacký University
Olomouc, 2023

INDONESIA

PAPUA NEW
GUINEA

AUSTRALIA

Coral Sea

Brisbane

Perth

Sydney

Adelaide

Canberra

Melbourne

Indian Ocean

Tasman Sea



Earthstar Geographics

TURBIDITY

Lake Turkana

21 January 2023

IMAGE MAP TYPE: Double Thematic

Image Component:

Thematic Content: Turbidity Raster

Data Source: Copernicus Global Land Service

Spatial Resolution: 100 m

Topographic Base: ESRI World Imagery

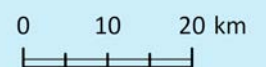
Symbol Component:

Labeling, Country boundary

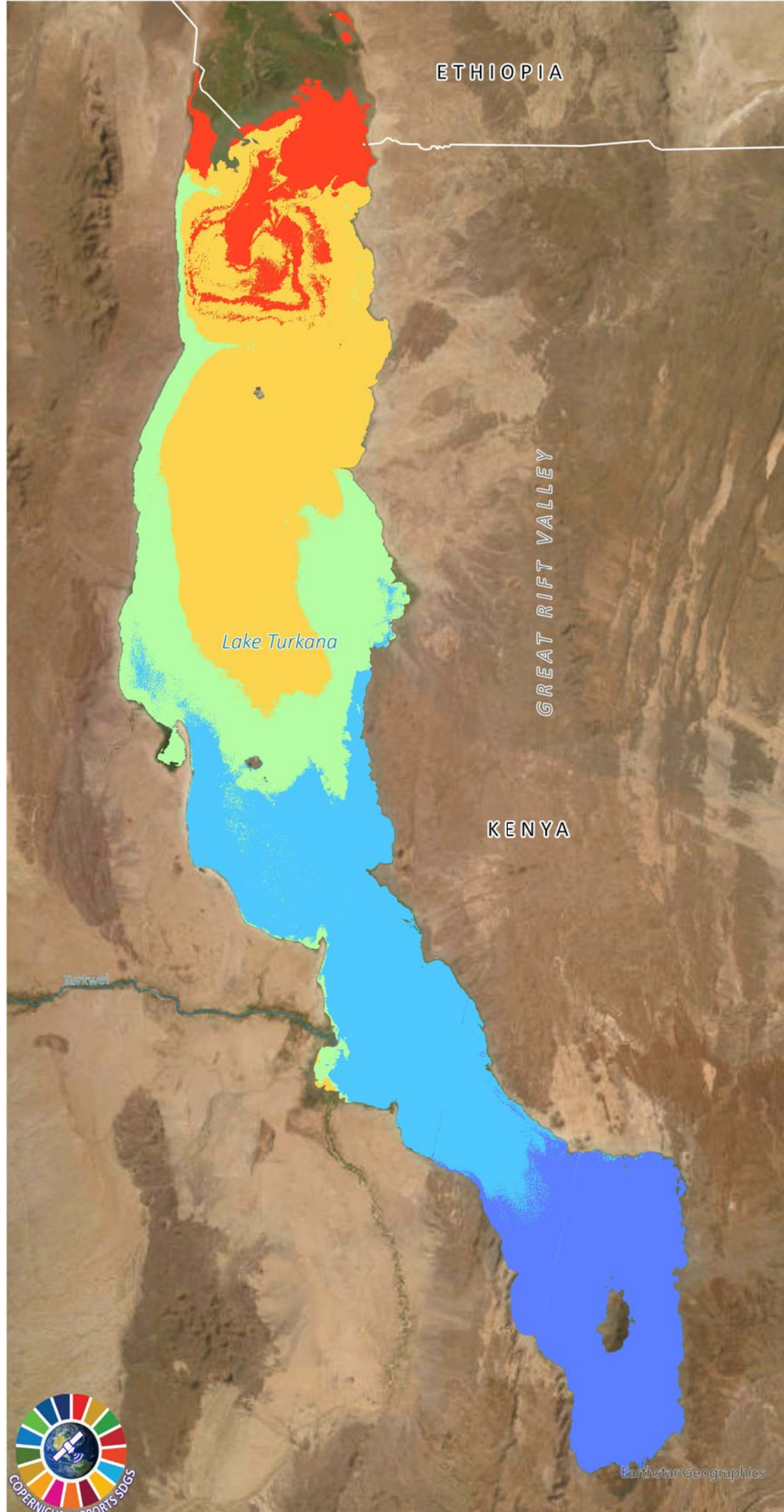
Blended Mean Turbidity (NTU)



Map Projection:
WGS 1984



Sushmita SUBEDI
Palacký University
Olomouc, 2023



BUILT-UP SURFACE

Vienna, 2020

IMAGE MAP TYPE: Double Thematic

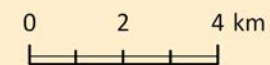
Image Component:
Thematic Content: Built-Up Surface Raster
Data Source: Global Human Settlement Layer [Copernicus Emergency Management Service]
Spatial Resolution: 100 m
Topographic Base: ESRI World Imagery

Symbol Component:
Labeling, State boundary, River

Built-Up Surface (m²)



Map Projection:
Albers Equal Area Conic



Sushmita SUBEDI
Palacký University
Olomouc, 2023

LOWER AUSTRIA

VIENNA

Donube

Earthstar Geographics



PARTICULATE MATTER (2.5)

China

15 February 2023

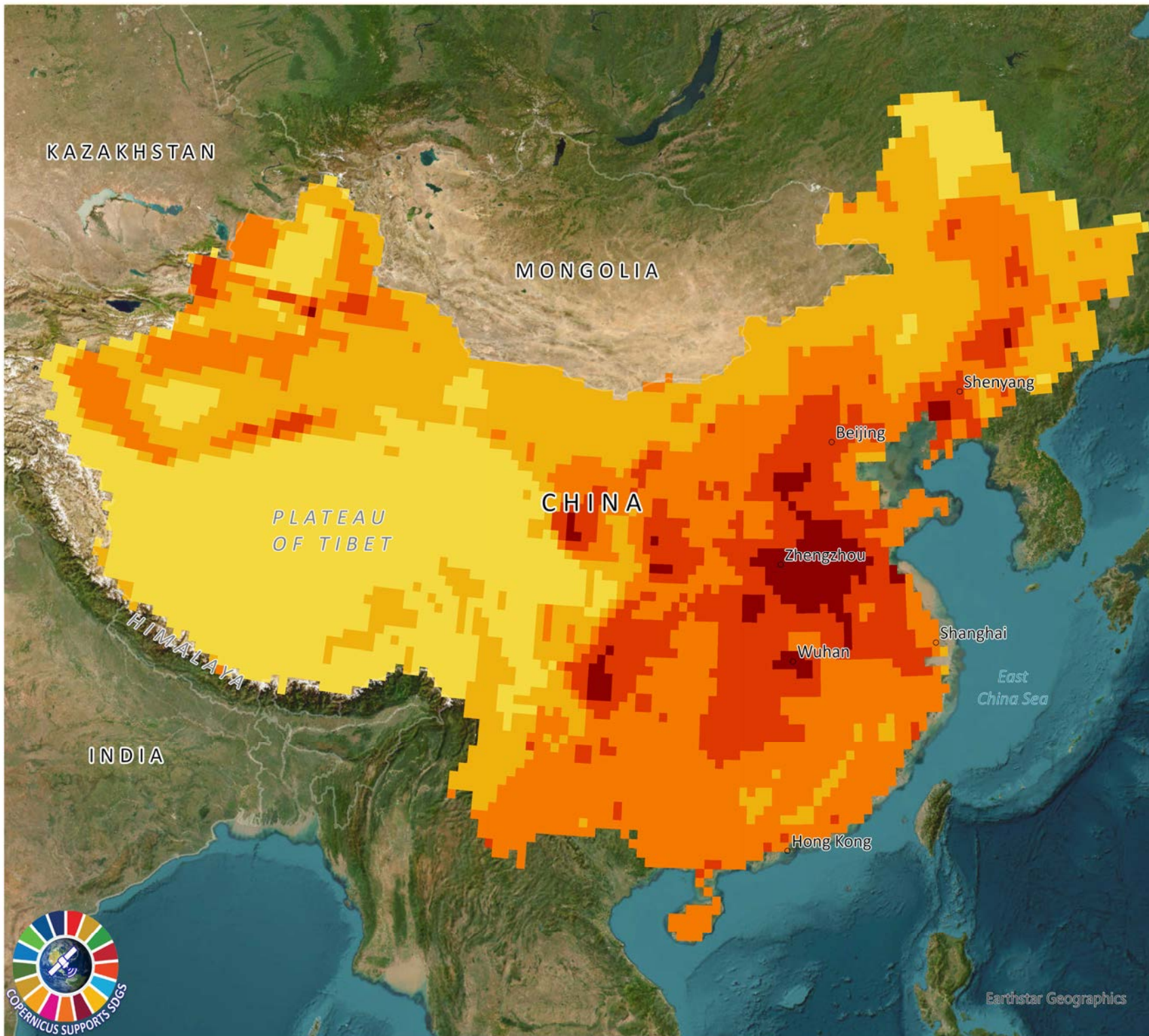


IMAGE MAP TYPE: Double Thematic

Image Component:

Thematic Content: PM 2.5 Raster
Data Source: Copernicus Atmosphere Monitoring Service
Spatial Resolution: 40 km
Topographic Base: ESRI World Imagery

Symbol Component:

Labeling, Country boundary, Cities

Particulate Matter 2.5 ($\mu\text{g}/\text{m}^3$)



Map Projection:

South China Sea Lambert



Earthstar Geographics

Sushmita SUBEDI
Palacký University
Olomouc, 2023

SURFACE WATER CHLOROPHYLL

Mediterranean Sea, December 2022

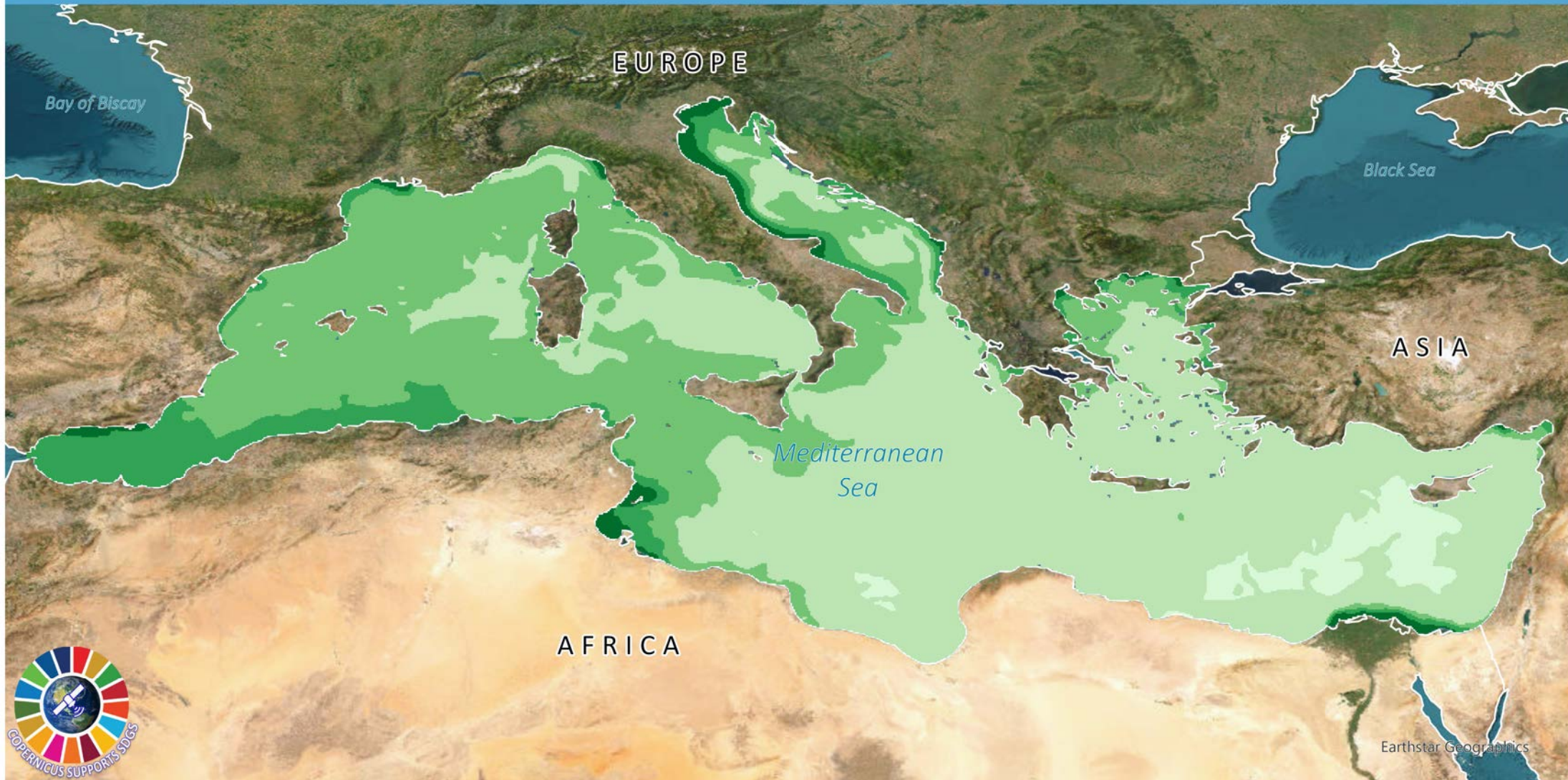
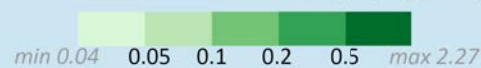


IMAGE MAP TYPE: Double Thematic

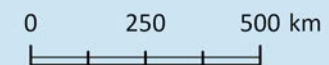
Symbol Component:
Labeling, Continent
boundary

Image Component:
Thematic Content: Surface Chlorophyll Raster
Data Source: Copernicus Marine Environment
Monitoring Service
Spatial Resolution: 4 km
Topographic Base: ESRI World Imagery

Surface Water Chlorophyll (mg/m³)



Map Projection:
WGS 1984



Sushmita SUBEDI
Palacký University
Olomouc, 2023

SEA WATER PH

Black Sea

January 2023



IMAGE MAP TYPE: Double Thematic

Image Component:

Thematic Content: Sea Water pH (7.5 m depth)

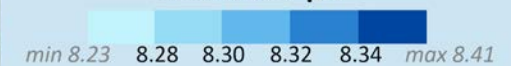
Data Source: Copernicus Marine Environment Monitoring Service
Spatial Resolution: 3 km

Topographic Base: ESRI World Imagery

Symbol Component:

Labeling, Country boundary

Sea Water pH



Map Projection:

WGS 1984 Web Mercator



Sushmita SUBEDI
Palacký University
Olomouc, 2023



Earthstar Geographics

SOLAR PHOTOVOLTAIC POWER

Europe, July 2022

IMAGE MAP TYPE: Double Thematic

Image Component:

Thematic Content: Solar Photovoltaic Power

Data Source: Copernicus Climate Change Service

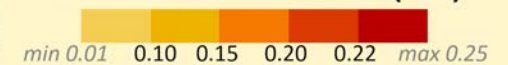
Spatial Resolution: 0.25°x 0.25°

Topographic Base: ESRI World Imagery

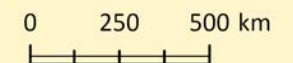
Symbol Component:

Labeling, Continent boundary

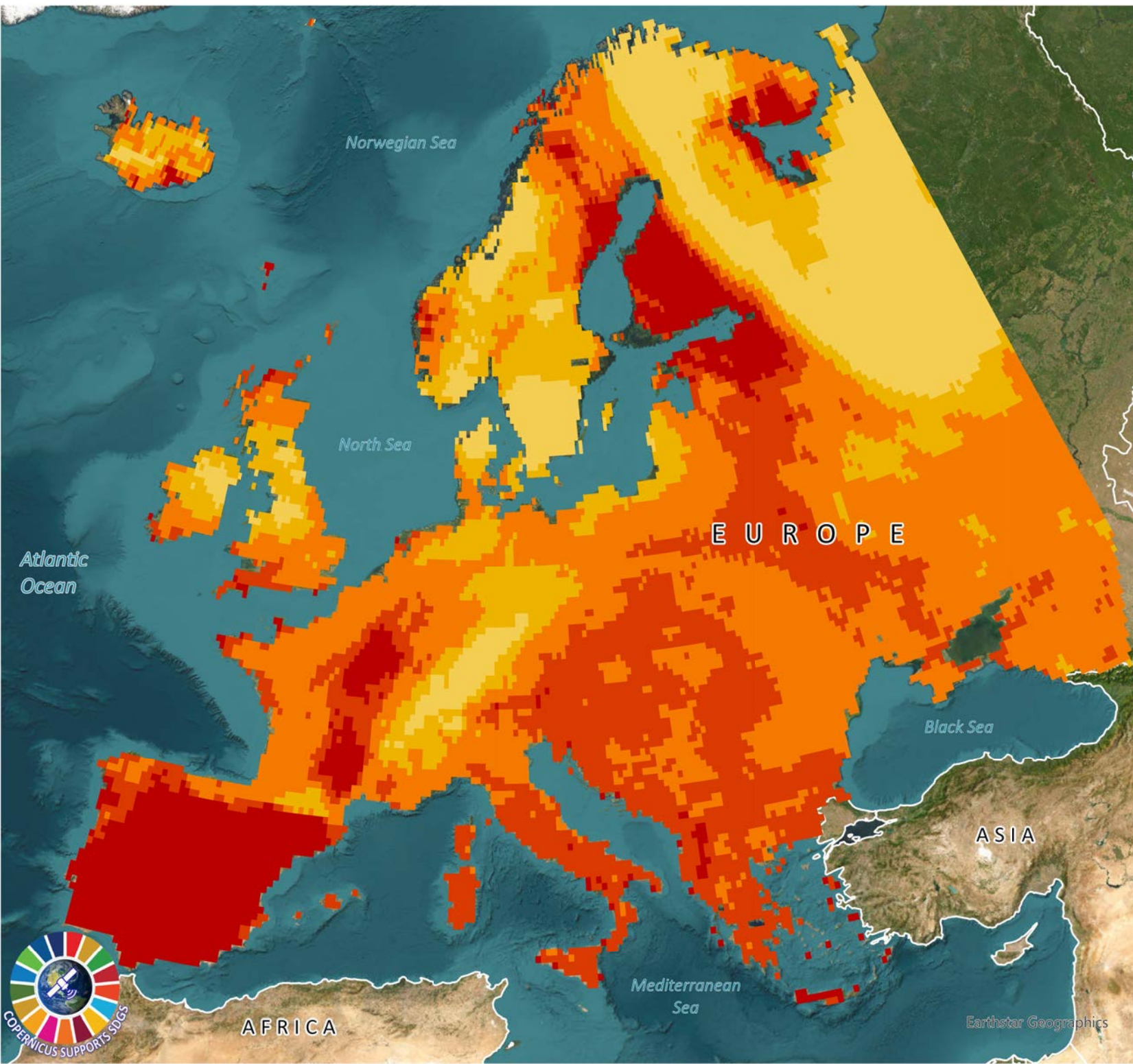
Solar Photovoltaic Power (CRF)



Map Projection:
Lambert Conformal Conic



Sushmita SUBEDI
Palacký University
Olomouc, 2023



SUITABILITY FOR AEDES ALBOPICTUS

Europe, January 2023

IMAGE MAP TYPE: Double Thematic

Image Component:

Thematic Content: Climatic Suitability
for *Aedes Albopictus*

Data Source: Copernicus Climate
Change Service

Spatial Resolution: 0.1°x 0.1°

Topographic Base: ESRI World Imagery

Symbol Component:

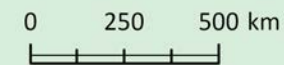
Labeling, Continent boundary

Climatic Suitability

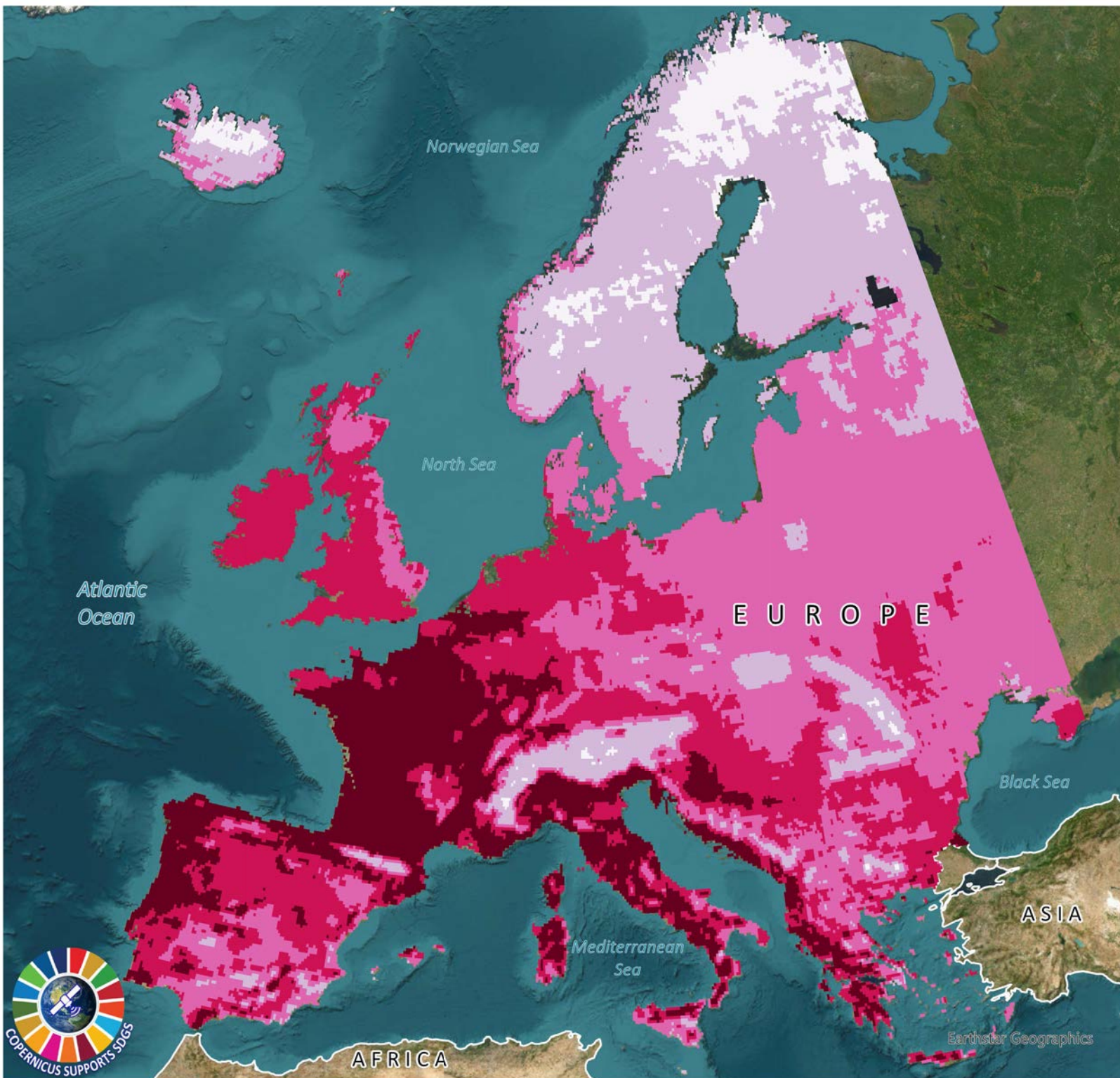


Map Projection:

Lambert Conformal Conic



Sushmita SUBEDI
Palacký University
Olomouc, 2023



ATLANTIC SALMON

Northwest European Shelf

January 2023

IMAGE MAP TYPE: Double Thematic

Image Component:

Thematic Content: Abundance of Atlantic Salmon (Gridded)

Data Source: Copernicus Climate Change Service

Spatial Resolution: 0.5°x 0.5°

Topographic Base: ESRI World Imagery

Symbol Component:

Labeling, Country boundary

Number of Atlantic Salmon



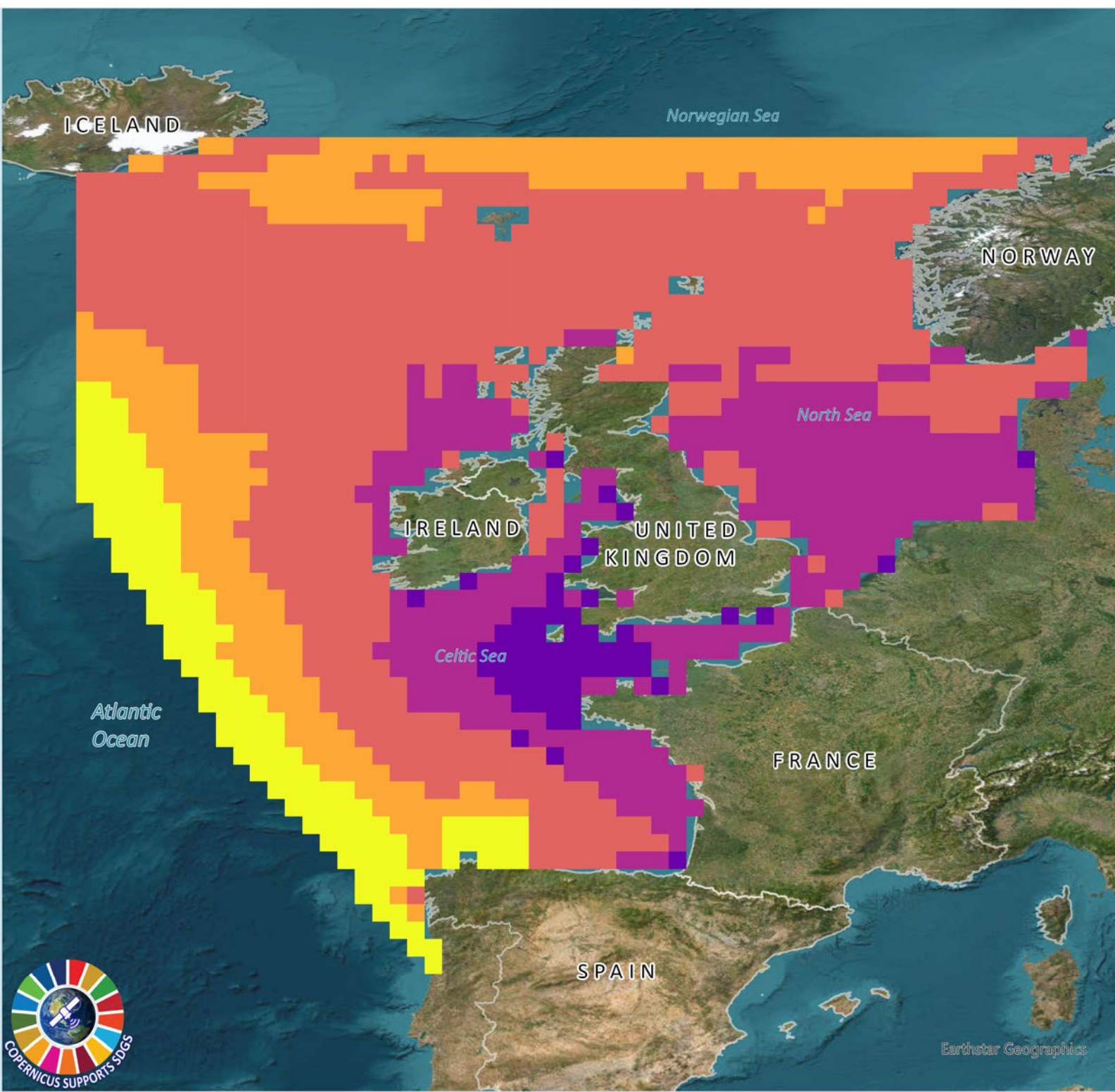
Map Projection:

WGS 1984

0 250 500 km



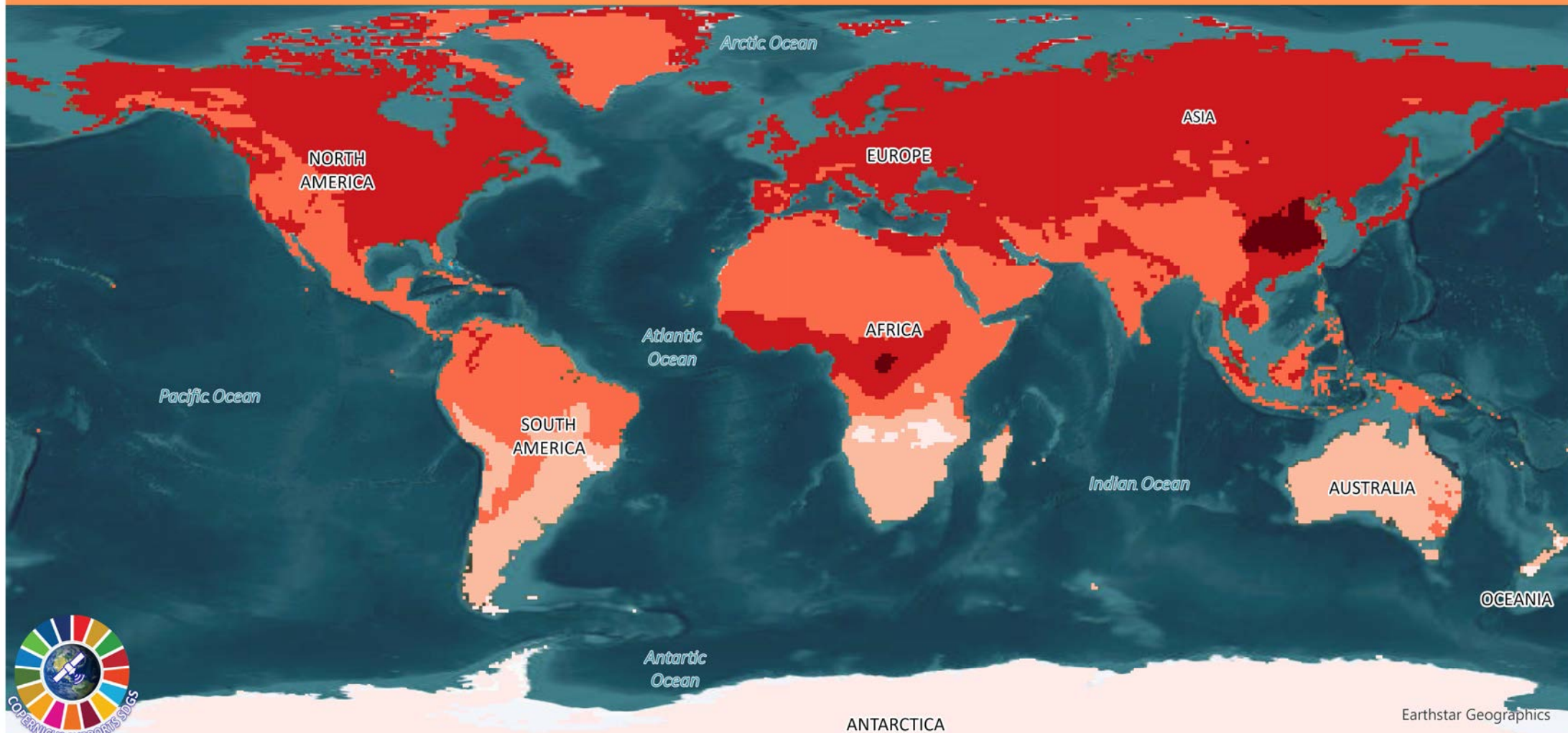
Sushmita SUBEDI
Palacký University
Olomouc, 2023



Earthstar Geographics

ATMOSPHERIC CARBON DIOXIDE

World Continents, January 2020



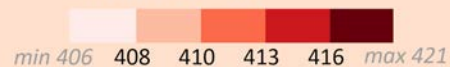
Earthstar Geographics

IMAGE MAP TYPE: Double Thematic

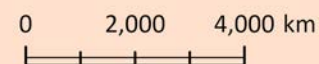
Symbol Component:
Labeling

Image Component:
Thematic Content: Atmospheric CO2 Raster
Data Source: Copernicus Atmosphere
Monitoring Service
Spatial Resolution: 0.75°x 0.75°
Topographic Base: ESRI World Imagery

CO2 Column-Mean Molar
Fraction (PPM)



Map Projection:
WGS 1984



Sushmita SUBEDI
Palacký University
Olomouc, 2023

ATMOSPHERIC METHANE

World Continents, January 2020

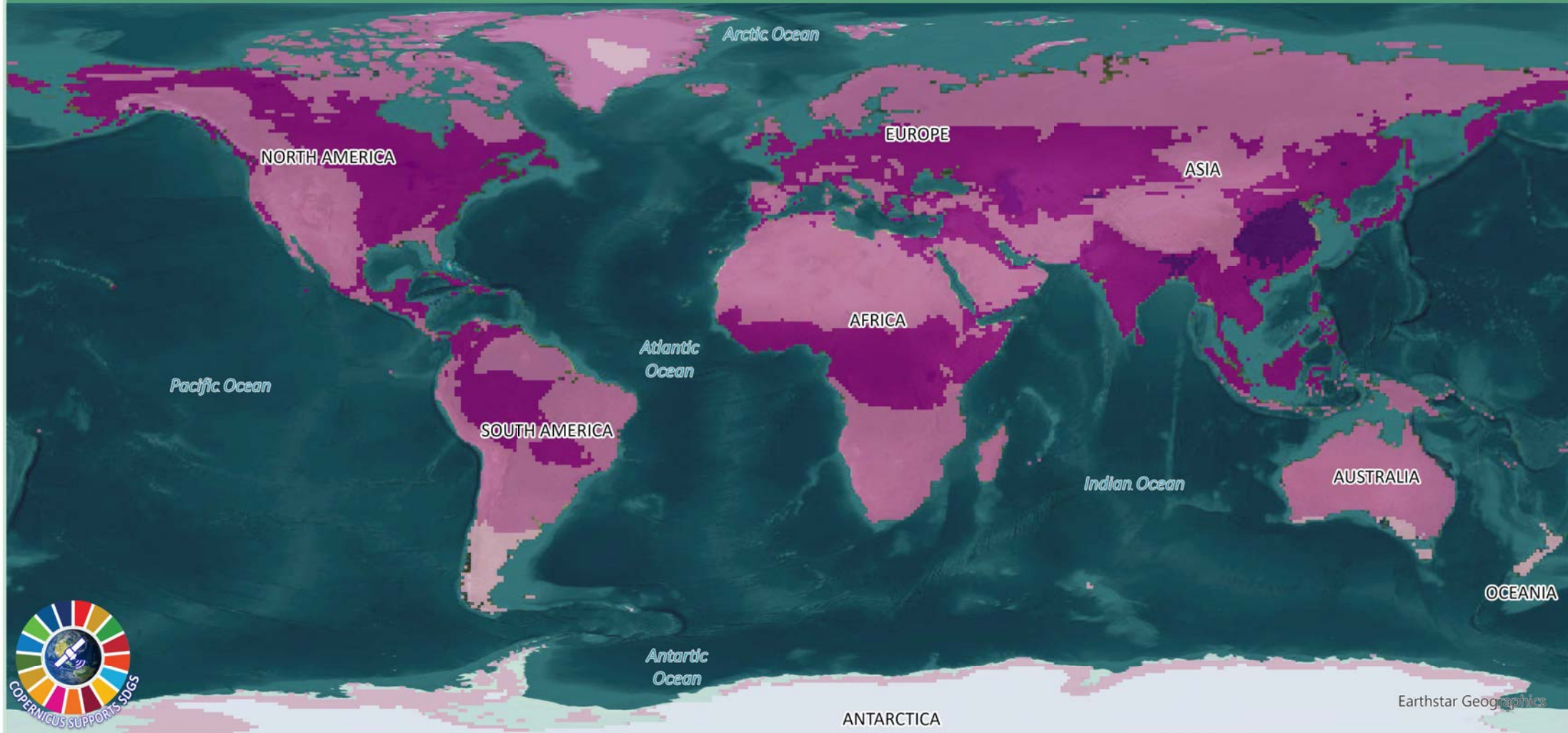
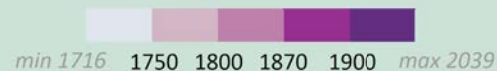


IMAGE MAP TYPE: Double Thematic

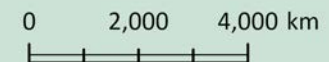
Symbol Component:
Labeling

Image Component:
Thematic Content: Atmospheric CH₄ Raster
Data Source: Copernicus Atmosphere
Monitoring Service
Spatial Resolution: 0.75°x 0.75°
Topographic Base: ESRI World Imagery

**Methane Column-Mean Molar
Fraction (PPB)**



Map Projection:
WGS 1984



Sushmita SUBEDI
Palacký University
Olomouc, 2023

FOREST COVER

Venezuela, 2019

IMAGE MAP TYPE: Back/Rear Thematic

Symbol Component:

Thematic Content: Forest Cover,
Country boundary, Labeling

Data Source: Copernicus Global Land
Service

Spatial Resolution: 100 m

Image Component:

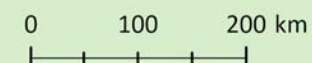
Topographic Base: ESRI World Imagery

 **Forest**

Total Area: 47,426,889 ha

Map Projection:

WGS 1984



Sushmita SUBEDI
Palacký University
Olomouc, 2023



WATER ECOSYSTEM

Minnesota, 2019

IMAGE MAP TYPE: Back/Rear Thematic

Symbol Component:

Thematic Content: Water bodies, State boundary, Labeling

Data Source: Copernicus Global Land Service

Spatial Resolution: 100 m

Image Component:

Topographic Base: ESRI World Imagery

 **Water Body**

Total Area: 1,203,013 ha

Map Projection:

NAD 1983

0 50 100 km



Sushmita SUBEDI
Palacký University
Olomouc, 2023



RIPARIAN GRASSLAND

Rhine Basin, 2018

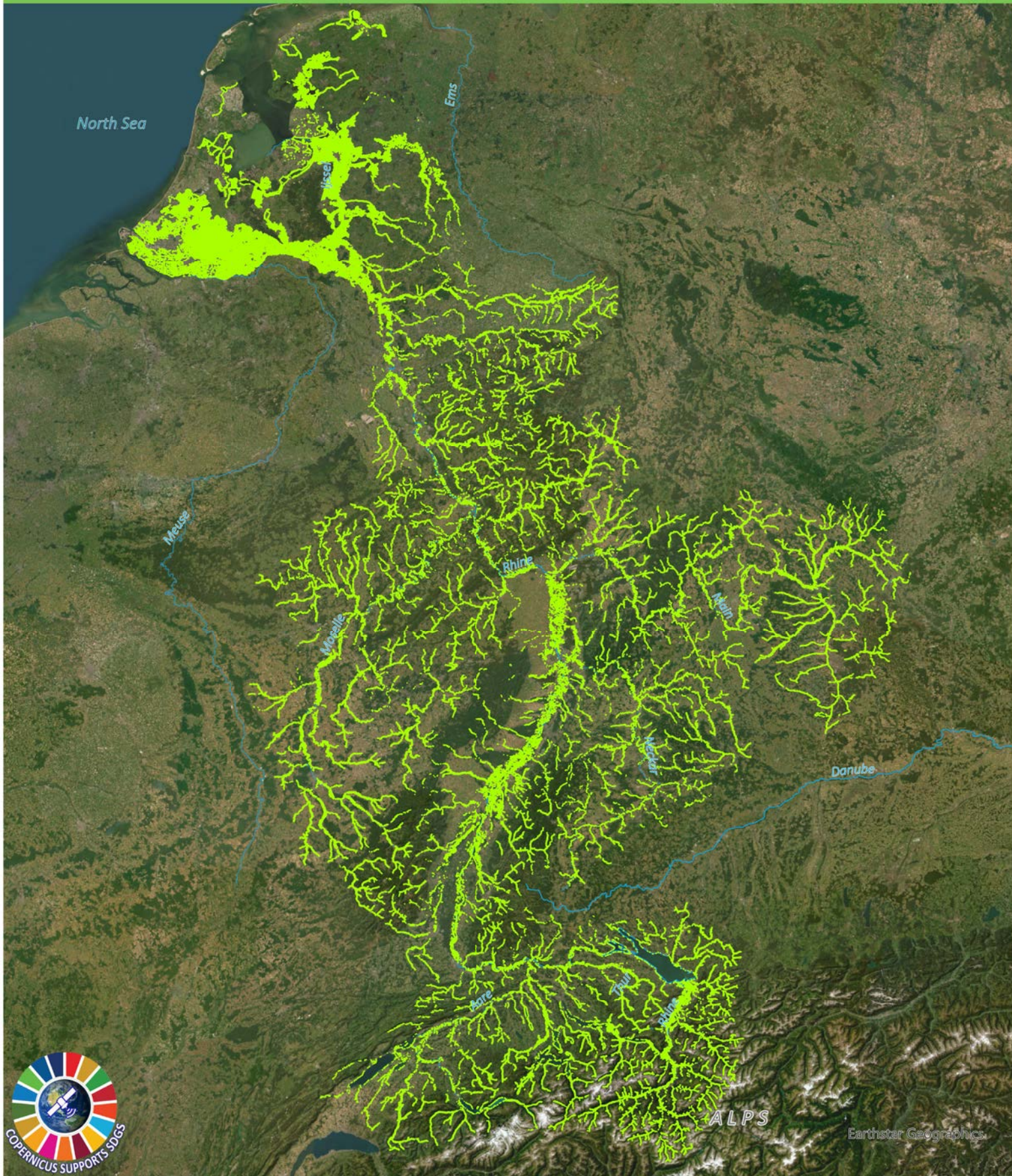



IMAGE MAP TYPE: Back/Rear Thematic

Image Component:
Topographic Base:
ESRI World
Imagery

Symbol Component:
Thematic Content: Riparian Grassland, River
network, Labeling
Data Source: Copernicus Land Monitoring Service
Spatial Resolution: 0.5 ha MMU

 Riparian Grassland

Total Area: 779,695.80 ha

0 50 100 km


Map Projection:
ETRS 1989 LAEA

Sushmita SUBEDI
Palacký University
Olomouc, 2023